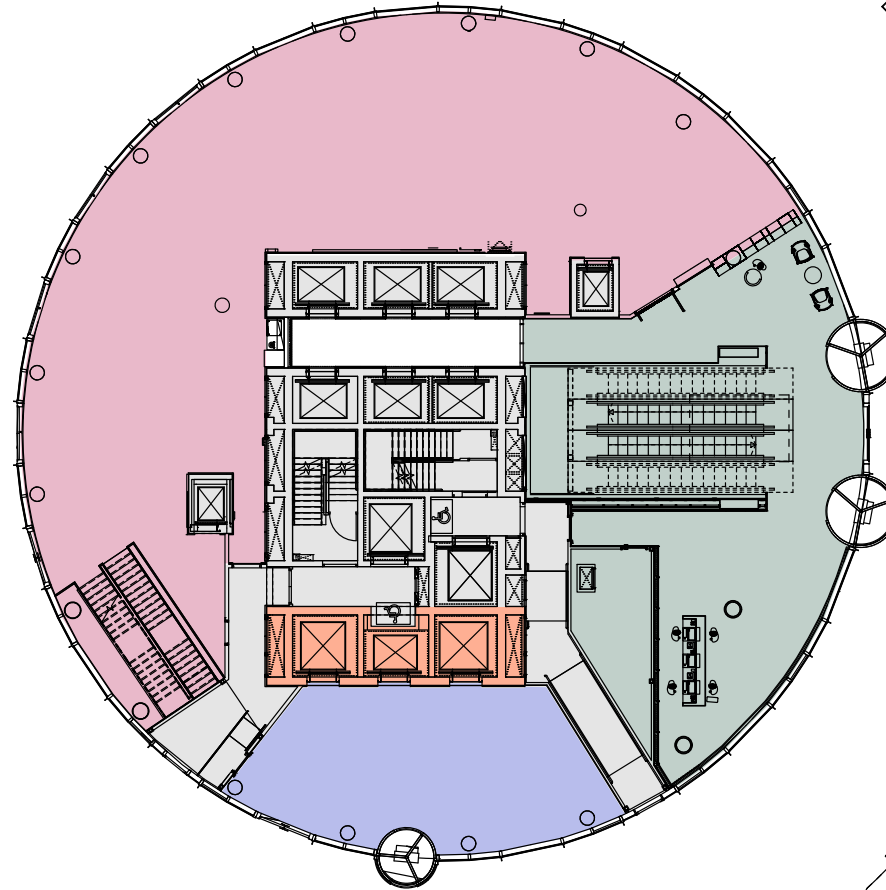


Old Street

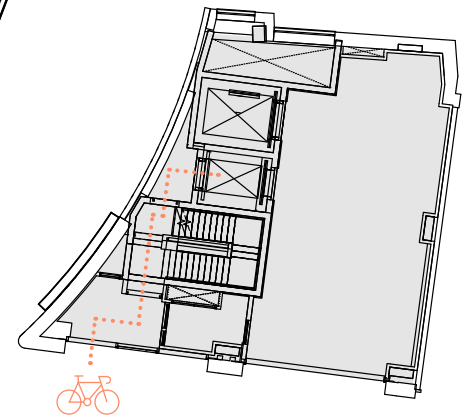
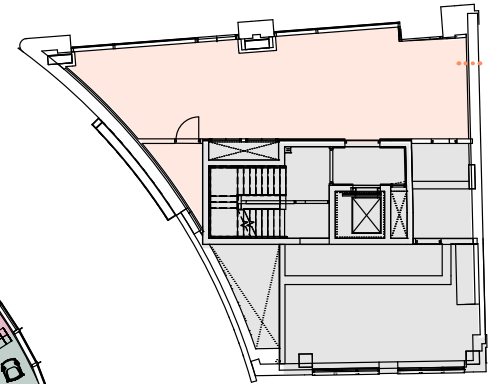
GROUND FLOOR

Reception 936 sq ft / 87 sq m

- Office Reception
- Office Lifts
- Bar / Restaurant
- Gym
- art'otel Lobby
- Core
- Cycle Entrance



Rivington Street

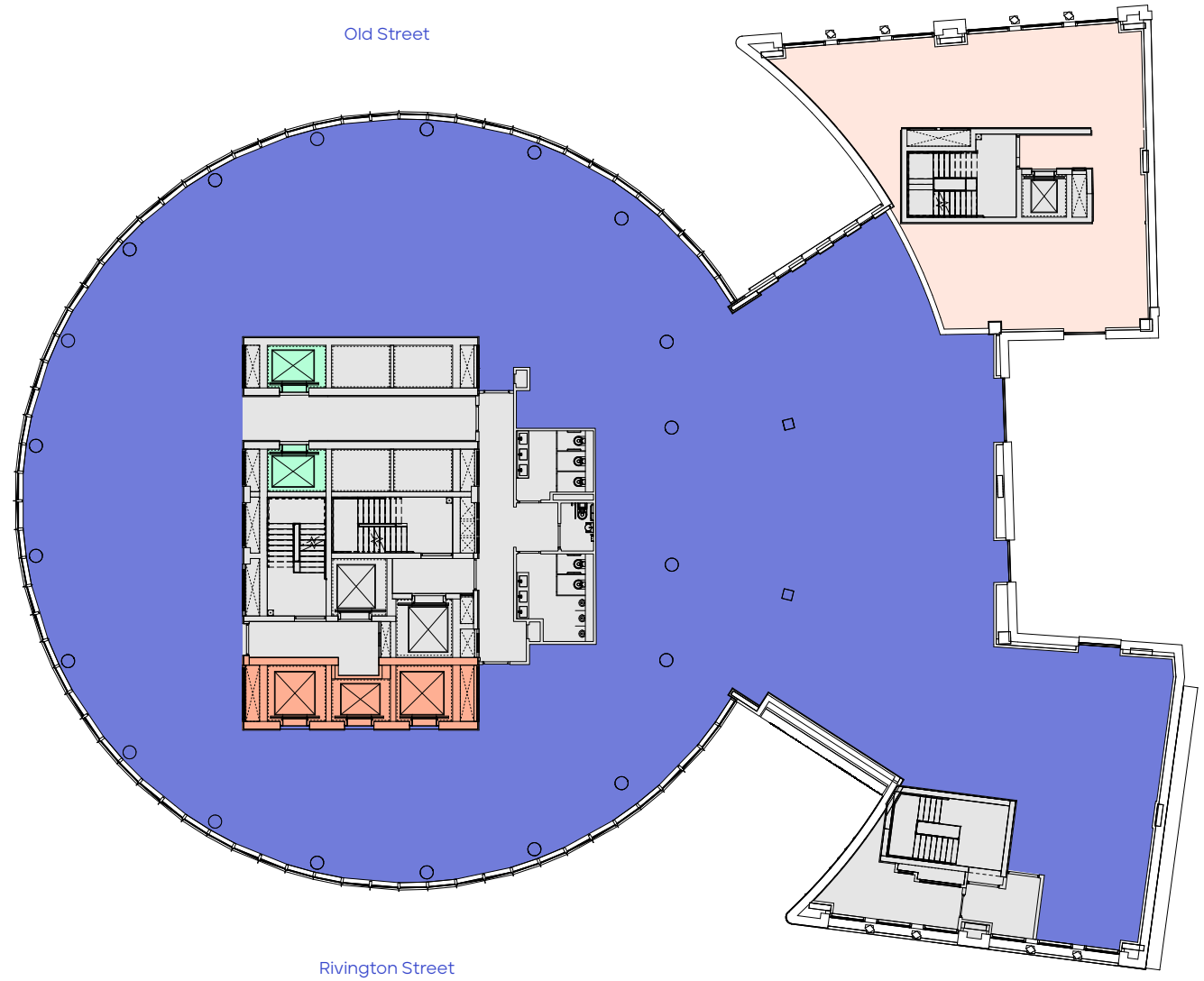


For indicative purposes only,
not to scale.

SECOND FLOOR

Office 11,851 sq ft / 1,101 sq m

- Office
- Office Lifts
- Lifts to 24th/25th floors
- Gym (no direct access)
- Core



For indicative purposes only,
not to scale.

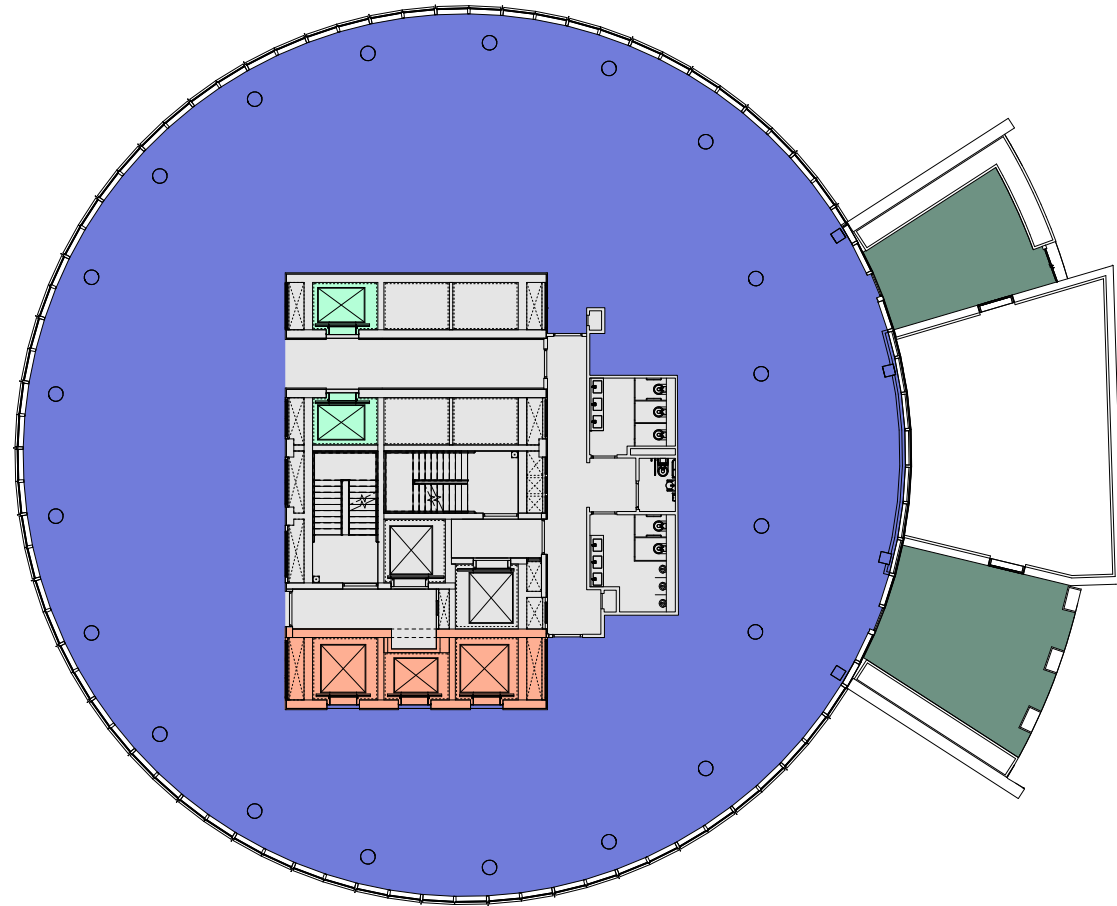
Old Street

FOURTH FLOOR

Office 9,278 sq ft / 862 sq m

Terrace 797 sq ft / 74 sq m

- Office
- Terrace
- Office Lifts
- Lifts to 24th/25th floors
- Core



Rivington Street



For indicative purposes only,
not to scale.

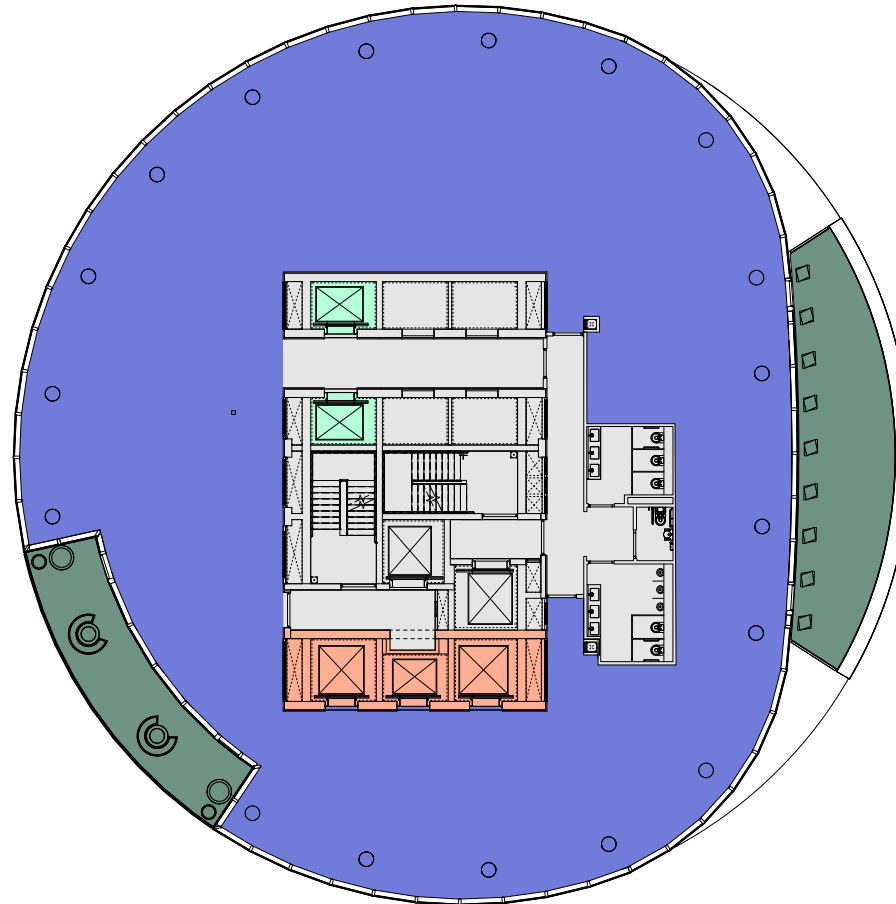
Old Street

FIFTH FLOOR

Office 7,825 sq ft / 727 sq m

Terrace 1,001 sq ft / 93 sq m

- Office
- Terrace
- Office Lifts
- Lifts to 24th/25th floors
- Core



Rivington Street



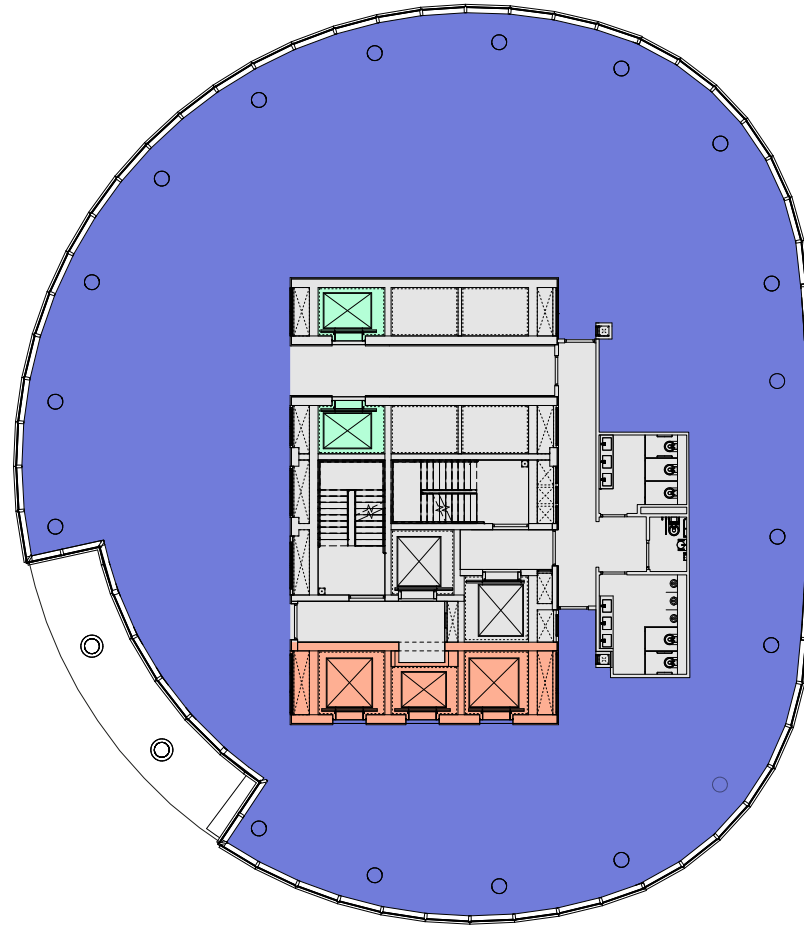
For indicative purposes only,
not to scale.

Old Street

SIXTH FLOOR

Office 7,836 sq ft / 728 sq m

- Office
- Office Lifts
- Lifts to 24th/25th floors
- Core



Rivington Street

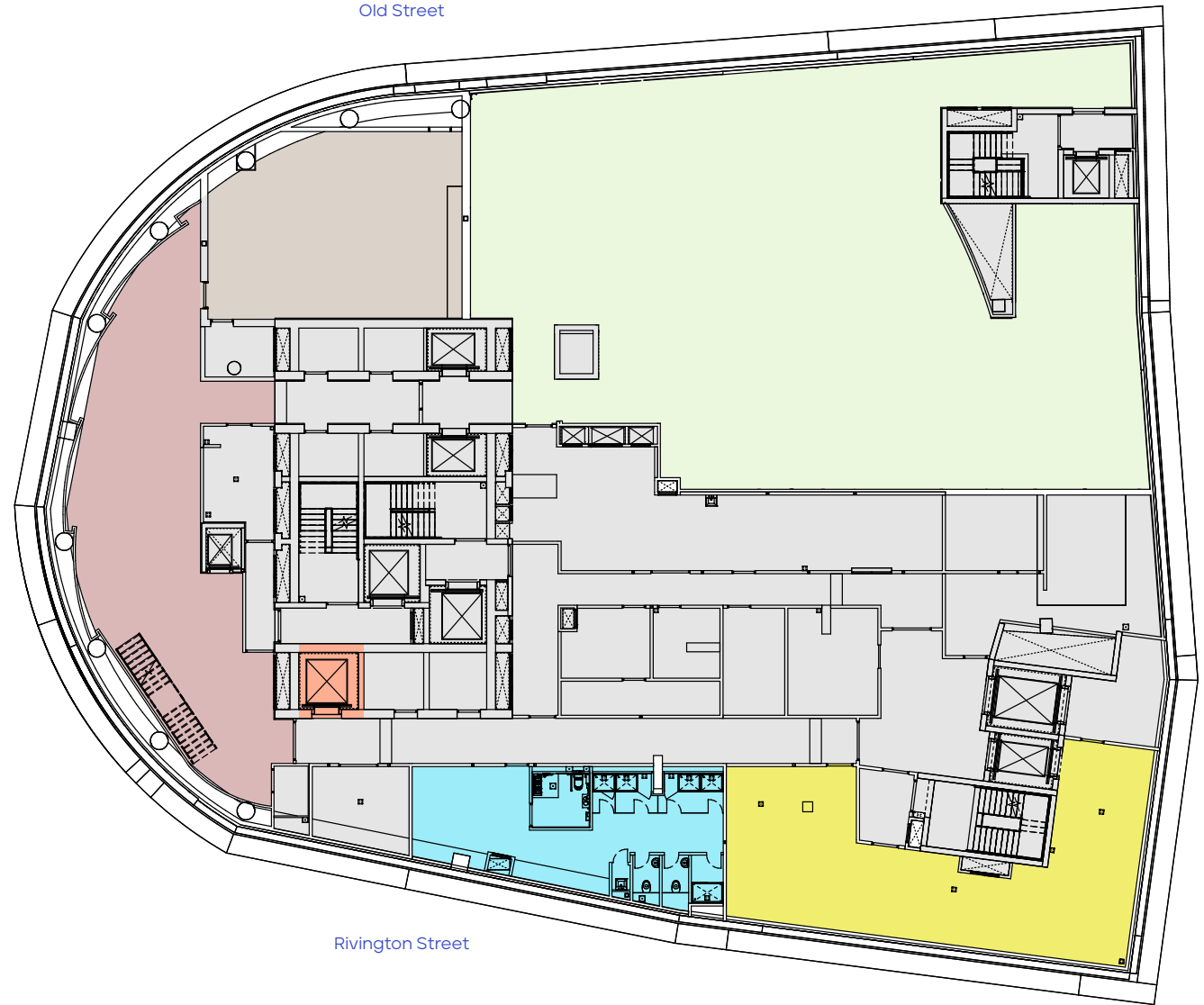


For indicative purposes only,
not to scale.

LEVEL -1

Office 11,496 sq ft / 1,068 sq m

- Cycle Store
- Showers/
Changing
- Auditorium
- Wellness/Spa
- Gallery
- Office Lifts
- Core



For indicative purposes only,
not to scale.